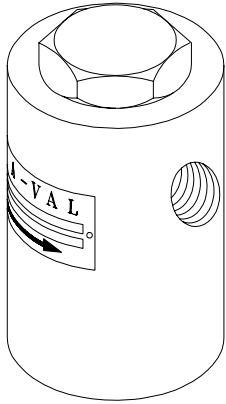


Model SBS-10 THD BASKET STRAINER - SIMPLEX



- Stainless steel, steel, and brass
- PVC, CPVC, TFE
- 1/2"-2" NPT THD
- Stainless steel perf or mesh
- Pressures to 4000 PSI (272 Bar); temp to 550 °F (288 °C)

Features

- **Body:** Standard materials are stainless steel, carbon steel, brass, PVC, CPVC, and TFE.
- **Heavy-duty basket** constructed of stainless steel perf and additional wire mesh when requested.
- **Perf:** Available from .020" to 3/16" openings (stainless steel only).
- **Mesh:** As small as .001" openings. 25 micron (#500 mesh) material available in stainless steel only.
- **Seal:** Standard seals are Buna and Viton O-ring. Other elastomers and seal types are available for higher temperatures and pressures.
- **Parallel ports:** NPT connections are standard. Special connections including flanges are also available.

Applications

This heavy-duty strainer can be used for liquids, steam, and gases for operating pressures up to 4000 PSI and temperatures up to 600 °F (for metal strainers and with special seals). It is used to protect various pipeline components such as pressure-reducing valves, relief valves, etc. that require clean, filtered, or strained liquids to keep these devices operational. The strainer basket element is constructed of a heavy duty stainless perf element with opening sizes from .020" up to 3/16", and when required, an additional stainless steel wire mesh can be added to screen out fine particles down to .001". Note that the overall length is not specified on the illustration as this is determined once the net open percent area is calculated from the perf or wire mesh size.

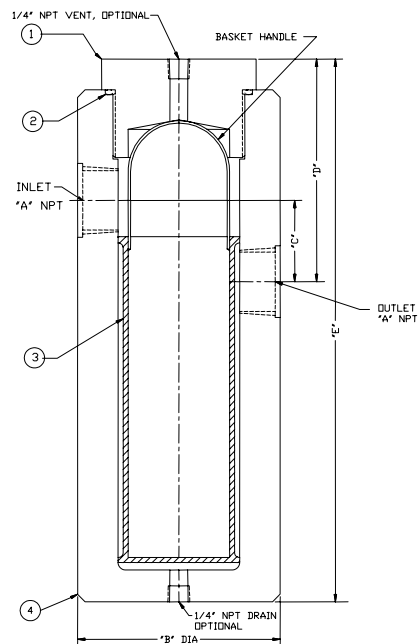
Special alloys such as Monel or Hastelloy can also be used in the manufacture of this strainer for very aggressive services. This construction is also available in PVC, CPVC, or Teflon but rated

for much lower pressures and temperatures (consult factory).

Although not illustrated, the strainer body can also be made available with flanges for the appropriate pressure rating.

Since this type of construction is usually suited for high-pressure service, the cover is a threaded plug type design which can be easily removed with an adjustable or pipe wrench. Where a quick-opening type cover is required for lower pressures to 150 PSI, our model SBV-05 is available with a quick-opening stainless steel V-band clamp. This model is available in carbon steel as well as in 316 stainless steel.

When requested an optional pressure gauge or drain connection can be provided for the SBS-10 strainer model.



Material List and Specification

- 1. * Cover Stainless steel
- 2. † Seal Buna, Viton
- 3. ‡ Basket Stainless steel
- 4. * Body Stainless steel

- * Alternate materials: carbon steel, Monel, Hastelloy
- † Alternate elastomers: Buna, EPDM, Teflon, Parfluor, Kalrez
- ‡ Basket: Specify wire mesh or perf size

Dimension "E" to suit specific application.
Specify net open basket area required.

Dimensions

Size A (NPT)	B	C	D
1/2	3	1-1/4	4
3/4	3	1-1/4	4-1/4
1	4	1-3/4	4-3/4
1-1/4	4-1/2	1-3/4	5-1/4
1-1/2	4-1/2	1-1/4	5-1/2
2	5	2-1/2	6-1/4

Note: Dimensions are approximate and are subject to change without notice. Request certified dimensions before final product installation.