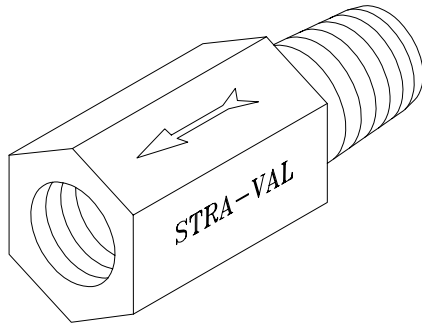


Model RVI-05 THD IN-LINE ADJUSTABLE PRESSURE RELIEF VALVE PIPED DISCHARGE



- Stainless steel or brass
- 1/8"-2" NPT THD
- Adjustable relief pressures from 0.5 PSI (0.03 Bar) to 400 PSI (27 Bar)*

Low-pressure Gas Valve, Liquid Valve Features

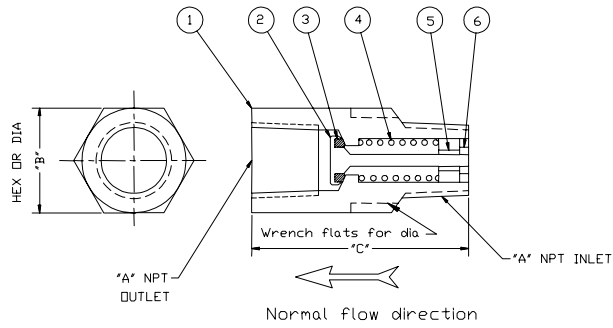
- **Body:** Standard materials are stainless steel, brass, and PVC.
- **Poppet:** The stainless steel pressure valve for gases and liquids and brass pressure gas valve are standard.
- **Spring:** Standard construction of the air pressure valve and liquid pressure valve is stainless steel, even when used with brass body.
- **Lock nut:** Standard construction is stainless steel, even when used with brass body.
- **Elastomeric seal:** Bubble-tight seal is achieved with standard elastomers such as Buna, Viton, and EPDM. Teflon and other sealing materials are also available. Several seal geometries can be used depending on the application.
- **Tamper-proof construction** requires removal of the air pressure valve to change the pressure setting.
- **Adjustable pressure-setting valve** can be factory-set or adjusted in the field. Springs can be changed to achieve a different pressure range.

Applications

This valve is normally used for liquids, air, or gases which cannot be safely discharged to atmosphere. Where the discharge can be directed to the atmosphere, please refer to our model RVA-05 series valves. To make sure the valves are protected from dirt and debris which might clog the valve, a strainer with a fine wire mesh should be installed before the inlet of the valve. In-line strainer fittings or basket strainers can be purchased from Stra-Val to solve this problem.

Principle of Operation

This is a poppet and spring type relief valve where the spring constantly opposes the pressure acting against the poppet which seals of the inlet port. The desired set pressure or relief is achieved by compressing the spring until the spring force is adequate to balance the pressure force acting against the poppet. The valve can be ordered factory-set for a specific pop-off pressure, or can be adjusted in the field. In order to make the pressure adjustment, the valve needs to be unscrewed from its mounting position with pressure removed from the line. A small nutdriver and screwdriver, or preferably a small adjusting tool which can be purchased from Stra-Val, is used to make this adjustment when required.



The illustration above is shown with a brass body and poppet, but it can be offered also in stainless steel.

Material List and Specification

- | | |
|-----------|-----------------|
| 1. Body | Brass |
| 2. Poppet | Brass |
| 3. Seal | Buna |
| 4. Spring | Stainless steel |
| 5. Guide | Brass |
| 6. Nut | Stainless steel |

- Alternate elastomers as specified

Dimensions

Size	A	B	C	D
1/8	1/2	.58	1-7/16	
1/4	5/8	.72	1-1/4	
3/8	3/4	.88	1-3/8	
1/2	1	1.16	2-3/8	
3/4	1-1/8	1.31	2-7/8	
1	1-1/8	1.31	3-3/4	
1-1/2	2-1/4	2.61	4-1/2	
2	3	3.47	6-1/4	

* 400 PSI for size 1/4" only.

Copyright © Stra-Val 2005. All rights reserved.